



A NEW LEAF

Agricultural **N**etwork
Exchanging **W**itnesses
and **L**eading **E**xperiences
Against the **F**raud

Technical and innovative tools and methods in support of CAP

Geo referencing methods/LPIS

Polish experience

Padova, May 27th 2015



This event is supported by the European Union Programme Hercule III (2014-2020).

This programme is implemented by the European Commission.

It was established to promote activities in the field of the protection of the financial interests of the European Union.
(for more information see http://ec.europa.eu/anti_fraud/about-us/funding/index_en.htm)'



A NEW LEAF

Agricultural Network
Exchanging Witnesses
and Leading Experiences
Against the Fraud

Polish experience - LPIS

Padova, May 27th 2015

Ms. Anna Czarnacka

Chief expert

ARiMR Poland

This document reflects the author's view and the European Commission is not responsible for the views displayed in the publications and/or in conjunction with the activities for which the grant is used.
The information contained in this publication does not necessarily reflect the position or opinion of the European Commission.





A NEW LEAF

Agricultural Network
Exchanging Witnesses
and Leading Experiences
Against the Fraud

Polish experience - LPIS



ABSTRACT

Presentation refers to Polish experience with LPIS.

Presentation contains:

- ✓ general information about LPIS – what it is, where and when can be used, UE regulations, orthophotomap, reference system used in Poland
- ✓ LPIS in Poland – short characteristics of LPIS in Poland, details refer to exchanging an orthophotomap, sources of updating LPIS, extra tools and sources used to verifying GIS data, good practise in Poland
- ✓ internal quality control of LPIS data - different ways of conducted control done by employees.





Agencja Restrukturyzacji i Modernizacji Rolnictwa

Padova, May 27th 2015



A NEW LEAF

Agricultural Network
Exchanging Witnesses
and Leading Experiences
Against the Fraud



Agenda:

- 1. LPIS – general information**
- 2. LPIS in Poland**
- 3. Good practise**
- 4. Internal quality control**



Padova, May 27th 2015



A NEW LEAF

Agricultural Network
Exchanging Witnesses
and Leading Experiences
Against the Fraud

LPIS – general informations



The **Land Parcel Identification System (LPIS)** is the key component of the **Integrated Administration and Control System (IACS)** for area based subsidies. It is the modern supporting tool in the form of a spatial register used within an IACS environment that helps the farmer who intends to apply for aid under any of the area-related aid schemes to identify any agricultural parcels intended to be listed in his annual declaration for EU aid.



Padova, May 27th 2015



A NEW LEAF
Agricultural Network
Exchanging Witnesses
and Leading Experiences
Against the Fraud

LPIS – general informations



LPIS is the heart of IACS system!

On the spot
control

Farm Register

Administrative
control

Farmers
declarations,
grafical
attachments

Risk analysis

Identification and
Registration of
Animals

Internet aid
application



Pauova, May 27th 2015



A NEW LEAF
Agricultural Network
Exchanging Witness
and Leading Experiences
Against the Fraud

LPIS – general informations



LPIS – legal basis

REGULATION (EU) No 1306/2013 OF THE EUROPEAN PARLIAMENT AND OF THE COUNCIL of 17 December 2013

Article 68

Elements of the integrated system

1. The integrated system shall comprise the following elements:

- a) computerised database;
- b) an identification system for agricultural parcels;**
- c) a system for the identification and registration of payment entitlements;
- d) aid applications and payment claims;
- e) an integrated control system;
- f) a single system to record the identity of each beneficiary of the support referred to in Article 67(2) who submits an aid application or a payment claim.



Padova, May 27th 2015



A NEW LEAF
Agricultural Network
Exchanging Witnesses
and Leading Experiences
Against the Fraud

LPIS – general informations



LPIS – legal basis

REGULATION (EU) No 1306/2013 OF THE EUROPEAN PARLIAMENT AND OF THE COUNCIL of 17 December 2013

Article 70

Identification system for agricultural parcels

1. The identification system for agricultural parcels shall be established on the basis of maps, land registry documents or other cartographic references. Use shall be made of computerised geographical information system techniques, including aerial or spatial orthoimagery, with a homogenous standard that guarantees a level of accuracy that is at least equivalent to that of cartography at a scale of 1:10 000 and, as from 2016, at a scale of 1:5 000, while taking into account the outline and condition of the parcel. This shall be fixed in accordance with existing Union standards.

Notwithstanding the first subparagraph, Member States may continue to make use of such techniques including aerial or spatial orthoimagery, with a homogenous standard that guarantees a level of accuracy that is at least equivalent to that of cartography at a scale of 1:10 000 where they were acquired on the basis of long-term contracts that were agreed before November 2012.



Padova, May 27th 2015



A NEW LEAF
Agricultural Network
Exchanging Witnesses
and Leading Experiences
Against the Fraud

LPIS – general informations



LPIS – legal basis

REGULATION (EU) No 1306/2013 OF THE EUROPEAN PARLIAMENT AND OF THE COUNCIL of 17 December 2013

Article 70

2. Member States shall ensure that the **identification system for agricultural parcels contains a reference layer to accommodate ecological focus areas**. That reference layer shall, in particular, cover the relevant specific commitments and/or environmental certification schemes referred to in Article 43(3) of Regulation (EU) No 1307/2013 that are equivalent to the practices in Article 46 of that Regulation before the application forms referred to in Article 72 of this Regulation for payments for agricultural practices beneficial for the climate and the environment referred to in Articles 43 to 46 of Regulation (EU) No 1307/2013 are provided in respect of claim year 2018 at the latest.



Padova, May 27th 2015



A NEW LEAF
Agricultural Network
Exchanging Witnesses
and Leading Experiences
Against the Fraud

LPIS – general informations



LPIS – all LPIS databases must be established on GIS solutions
... so what is this ... GIS??

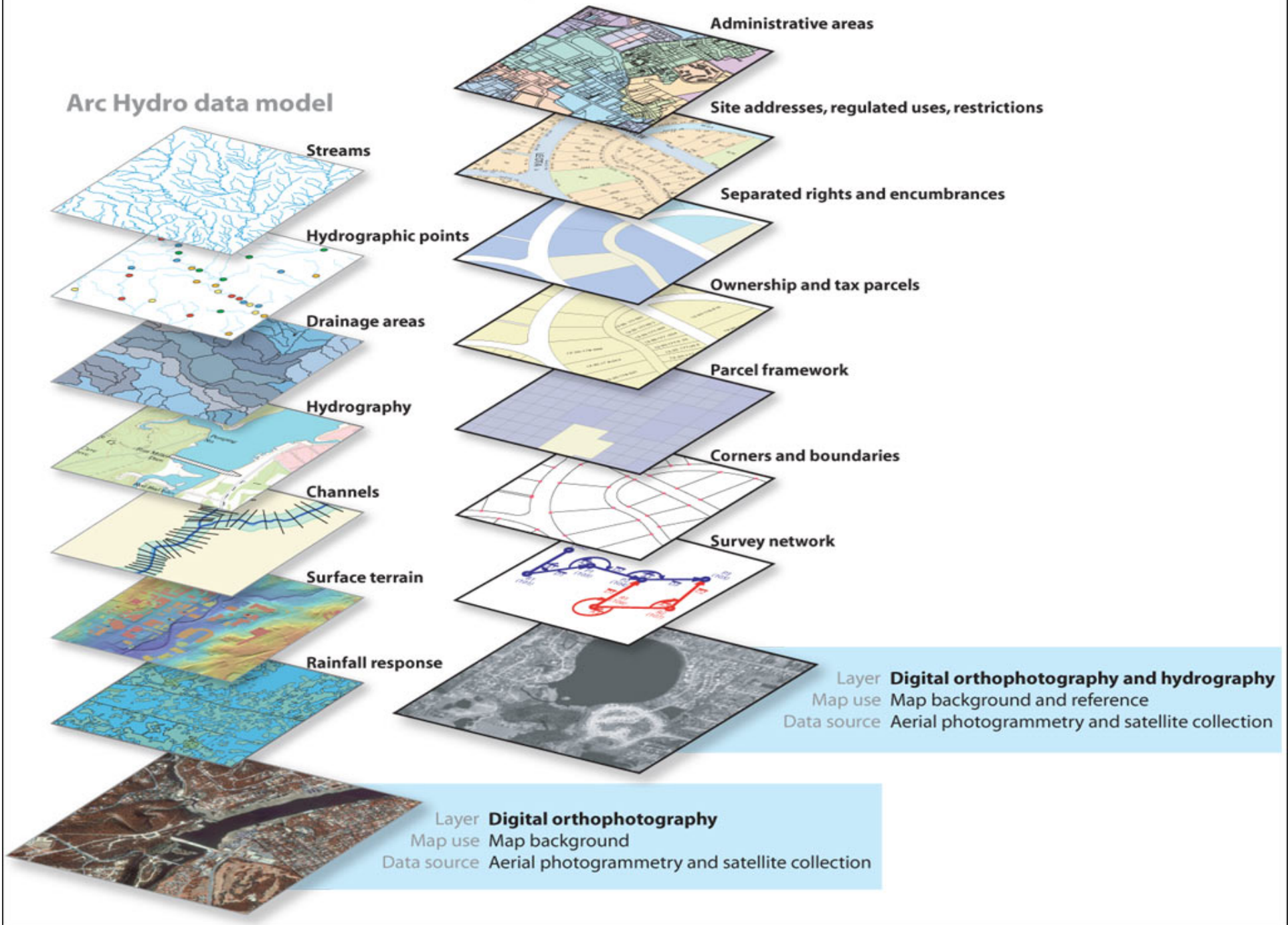
Geographic information system (GIS) is a system designed to:

- ✓ capture,
- ✓ store,
- ✓ manipulate,
- ✓ analyze,
- ✓ manage
- ✓ present all types of spatial or geographical data with all necessarily attributes .



Land parcel data model

Arc Hydro data model





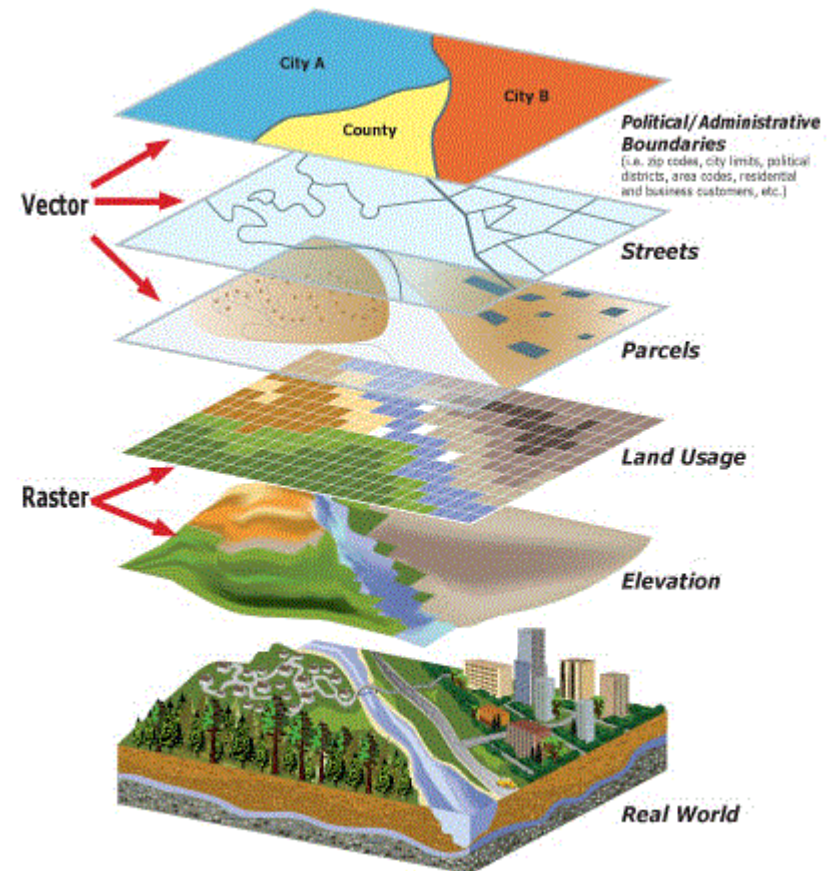
A NEW LEAF

Agricultural Network
Exchanging Witnesses
and Leading Experiences
Against the Fraud

LPIS – general informations



LPIS layers – the heart of LPIS!



Padova, May 27th 2015



A NEW LEAF
Agricultural Network
Exchanging Witnesses
and Leading Experiences
Against the Fraud

LPIS – general informations



LPIS layers – the heart of LPIS!

Ortophotomap –

- ✓ digital ortophotomap is the raster,
- ✓ cartometric image of the terrain which was created by the orthogonal projection of aerial photographs or satellite scenes,
- ✓ the quality of the ortophotomap is determined by spatial resolution (ang. GSD), which determines the size of the pixel in the field.



Padova, May 27th 2015



A NEW LEAF

Agricultural Network
Exchanging Witnesses
and Leading Experiences
Against the Fraud

LPIS – general informations



Reference system – cadastral parcel



Padova, May 27th 2015



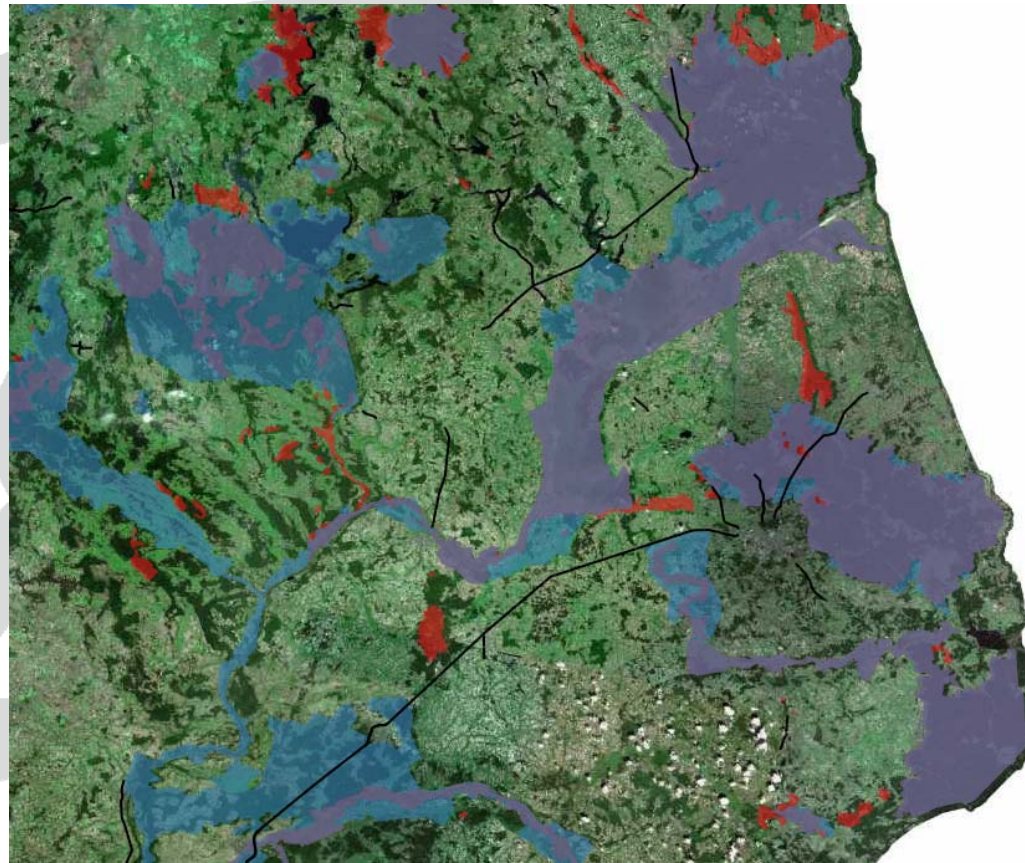
A NEW LEAF

Agricultural Network
Exchanging Witnesses
and Leading Experiences
Against the Fraud

LPIS – general informations



Additional layers – eg. Natura 2000



Padova, May 27th 2015



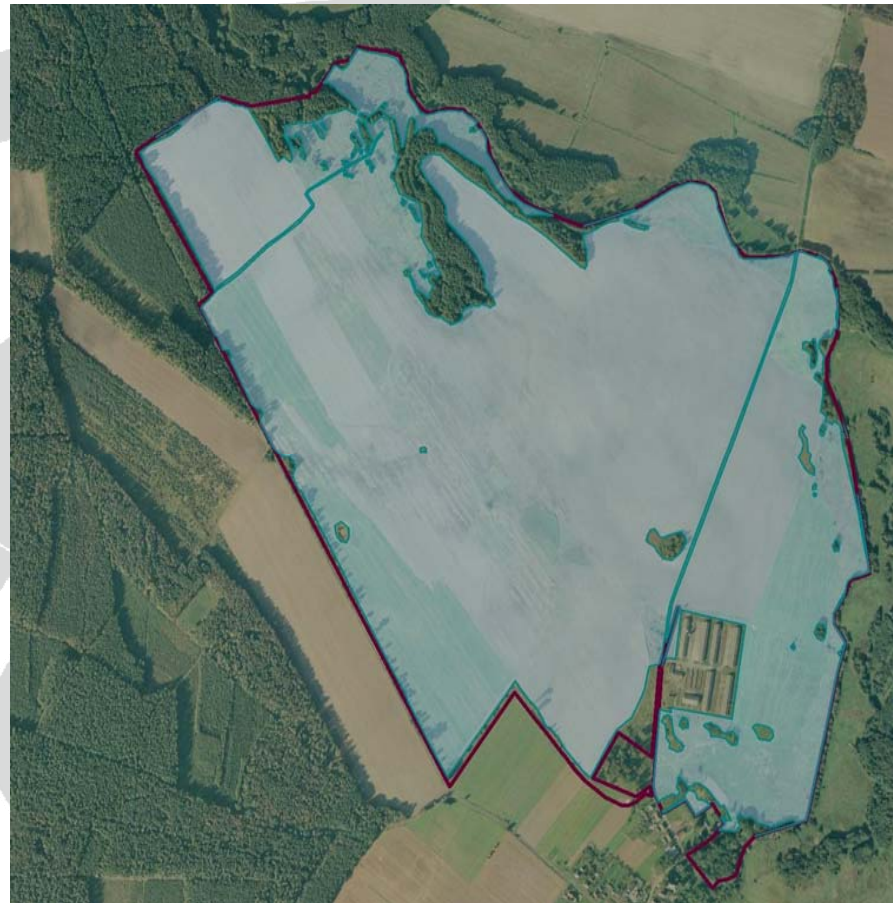
A NEW LEAF

Agricultural Network
Exchanging Witnesses
and Leading Experiences
Against the Fraud

LPIS – general informations



LPIS must provide eligible area of all declared agricultural parcels.



Padova, May 27th 2015



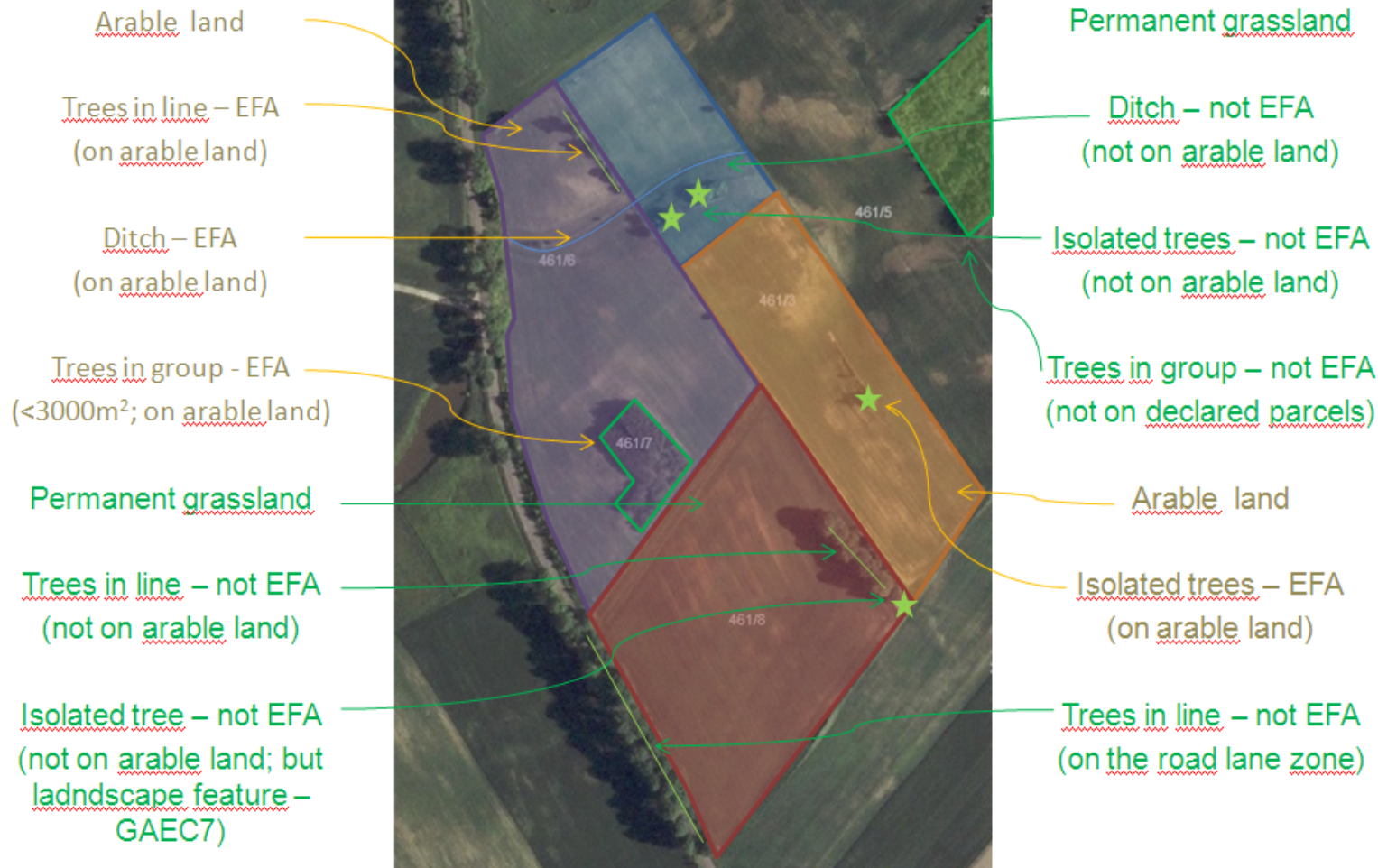
A NEW LEAF

Agriculture
Exchange
and Leader
Against

LPIS – general informations



EFA – Guidelines for farmers



Padova, May 27th 2015



A NEW LEAF

Agricultural Network
Exchanging Witnesses
and Leading Experiences
Against the Fraud



LPIS in Poland



Padova, May 27th 2015



A NEW LEAF
Agricultural Network
Exchanging Witnesses
and Leading Experiences
Against the Fraud

LPIS in Poland



The biggest LPIS database in Europe! LPIS system based on Cadastre.

Area of Poland	–	312 000 km ²
Reference parcels	–	34 696 000
Reference parcels (SAPS)	–	10 407 689
Reference area (SAPS)	–	141 000 km ² (45%)
Number of farmers (Farm Register)	–	2 000 000
Average size of the holding	–	10,23ha (increasing)
Number of applications (SAPS)	–	1 373 000
Number of agricultural parcels (SAPS)	–	9 935 315
Average number of LPIS updates	–	210 000



Padova, May 27th 2015

We may mention the following sources of the update:

- I. Exchange of an orthophotomap;
- II. Changes from the farmer's application along with the attachment;
- III. Results of on-the-spot controls;
- IV. Update of SWDE vector and descriptive data;
- V. Other information from the farmer.





A NEW LEAF

Agricultural Network
Exchanging Witnesses
and Leading Experiences
Against the Fraud

LPIS in Poland



Ortophotomaps in Poland



Padova, May 27th 2015



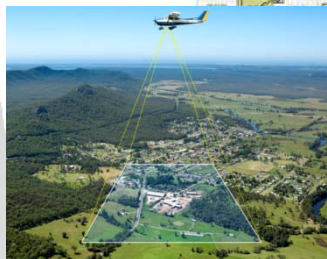
A NEW LEAF

Agricultural Network
Exchanging Witnesses
and Leading Experiences
Against the Fraud

LPIS in Poland



Ortophotomaps in Poland



Ortophotomaps parameters – 100% coverage
in 3 years

Area	312 000 km ²
Ortophoto resolution	25 cm/50 cm
Spectral range	RGB and (IR)

Tender informations:

- exchanging in 3 years cycle
- partly - 30 % per year
- Import ends at 20 of November each year



Padova, May 27th 2015



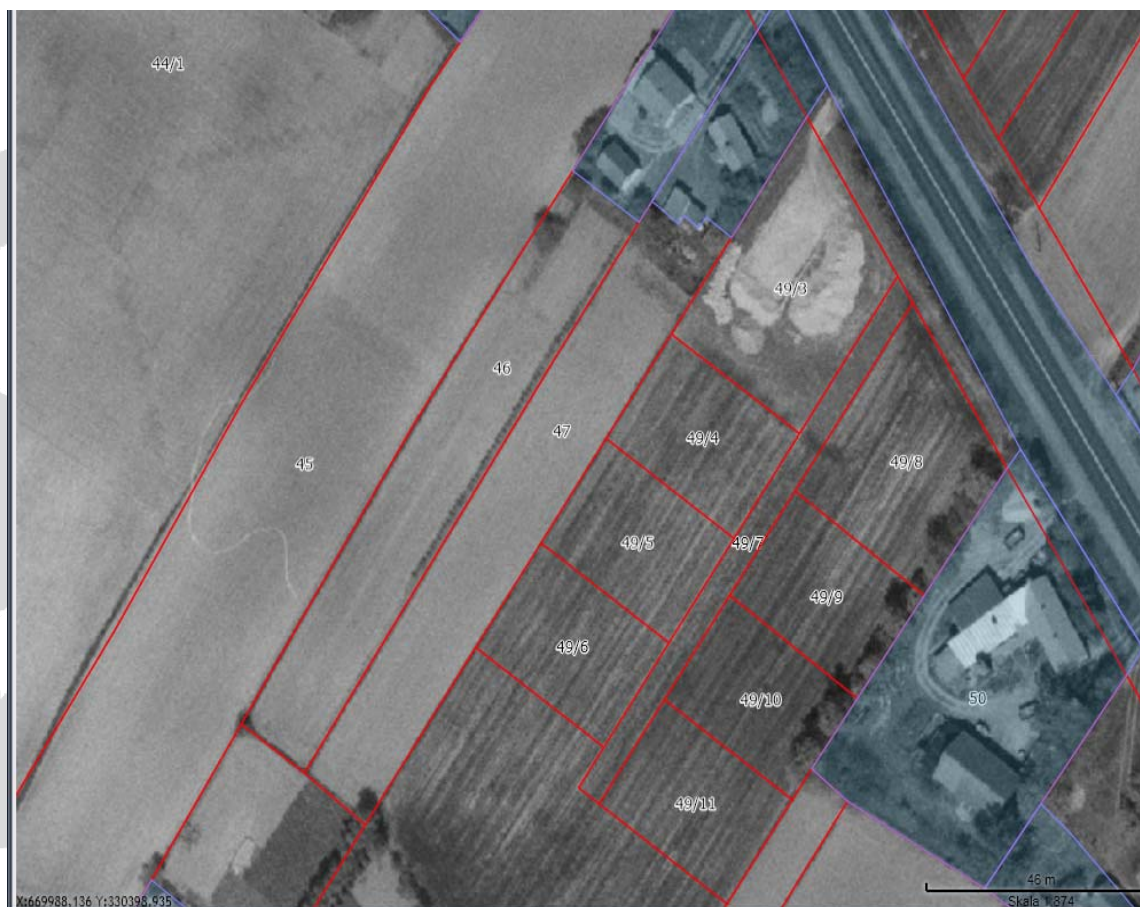
A NEW LEAF

Agricultural Network
Exchanging Witnesses
and Leading Experiences
Against the Fraud

LPIS in Poland



Ortophotomaps in Poland - exchange



Padova, May 27th 2015



A NEW LEAF
Agricultural Network
Exchanging Witnesses
and Leading Experiences
Against the Fraud

LPIS in Poland



Ortophotomaps in Poland - exchange



Padova, May 27th 2015



A NEW LEAF

Agricultural Network
Exchanging Witnesses
and Leading Experiences
Against the Fraud

LPIS in Poland



Ortophotomaps in Poland - exchange



Padova, May 27th 2015



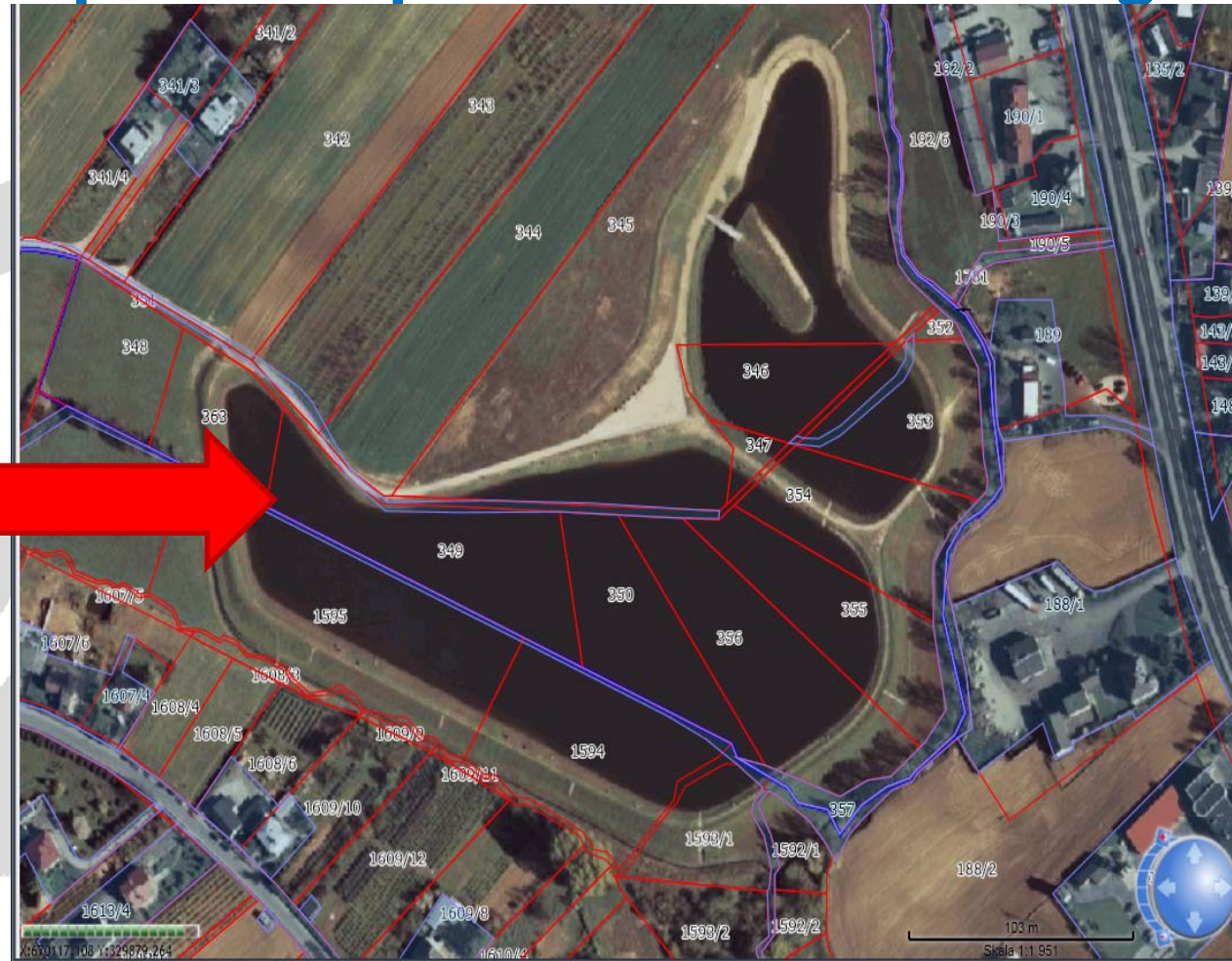
A NEW LEAF

Agricultural Network
Exchanging Witnesses
and Leading Experiences
Against the Fraud

LPIS in Poland



Ortophotomaps in Poland - exchange



Padova, May 27th 2015



Agencja Restrukturyzacji i Modernizacji Rolnictwa
ARMR

Dane producenta rolnego	
Numer	
Imię	
Nazwisko/nazwa	(1)

Działki producenta znajdujące się na materiale graficznym.

ROMANY ZALESIE I KRAJEWO KLÓD.
142206_2.0031.8/1

(2)

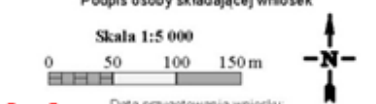
Legenda:

90/1	Działka ewidencyjna	90/2	Działka ewidencyjna z wniosku
90/2	Sady	90/3	Tereny zalesione i zakrzewione
90/3	Pozostałe tereny wyłączane	90/4	DR 10
A	Oznaczenie działki rolnej (patrz instrukcja)	90/5	Deklarowany obszar (zaznaczony na czerwono)
---	Rów	90/6	Pomnik przyrody
90/7	Zagajniki	90/8	Zalesienia

(3)

(4) Data wypełnienia materiału graficznego

Podpis osoby składającej wniosek



(5) Data przygotowania wniosku: 25-11-2011



A NEW LEAF

Agricultural Network
Exchanging Witnesses
and Leading Experiences
Against the Fraud

LPIS in Poland



LPIS must provide graphical material (maps) for on-the-spot checks, in both – Controls with Remote Sensing and Rapid Field Visits



Padova, May 27th 2015



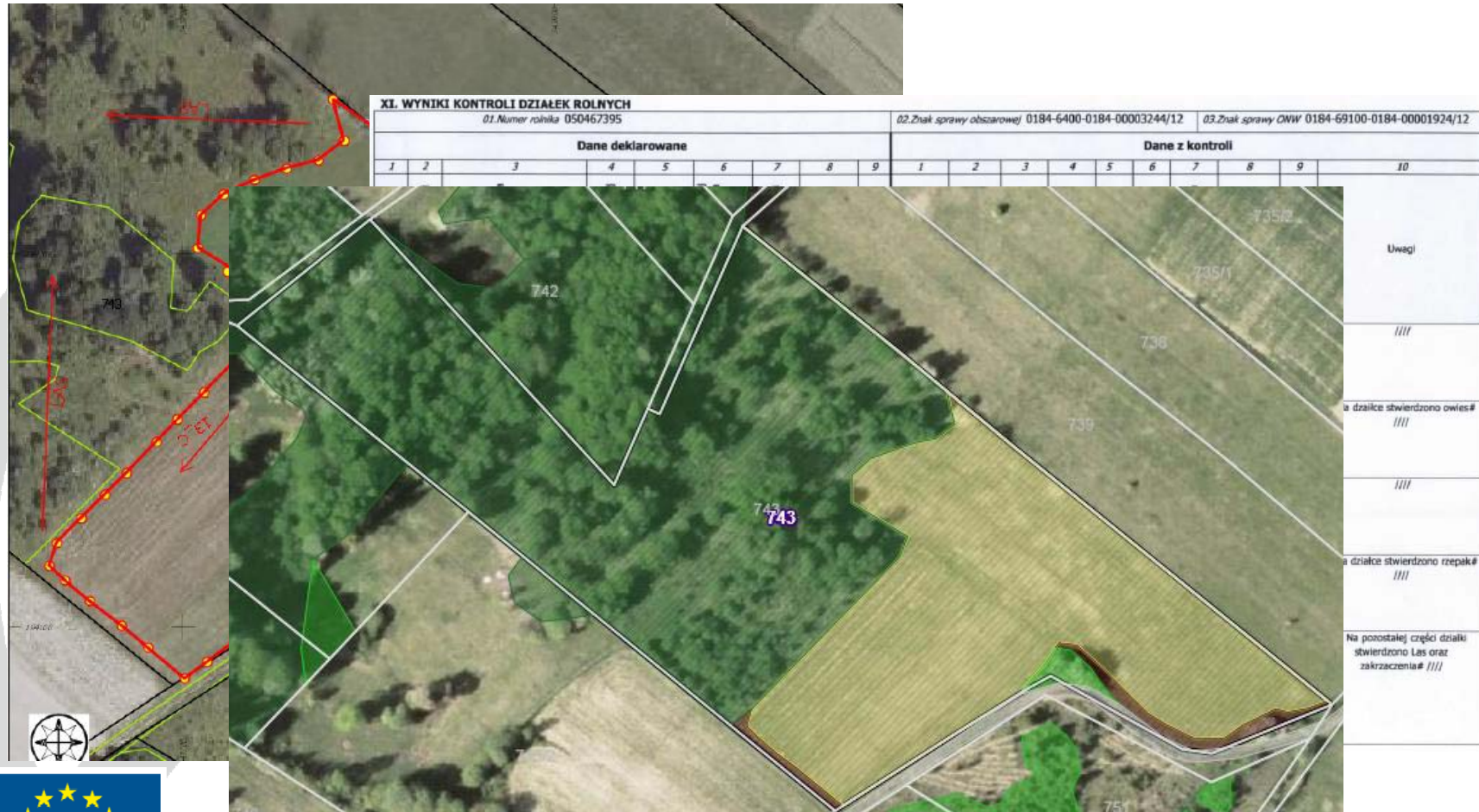
A NEW LEAF

Agricultural Network
Exchanging Witnesses
and Leading Experiences
Against the Fraud

LPIS in Poland



OTSC - results



Padova, May 27th 2015



A NEW LEAF

Agricultural Network
Exchanging Witnesses
and Leading Experiences
Against the Fraud

LPIS in Poland



Cadastral
Before modification



Padova, May 27th 2015



A NEW LEAF
Agricultural Network
Exchanging Witnesses
and Leading Experiences
Against the Fraud

LPIS in Poland



Cadastral map
After modification



Padova, May 27th 2019



A NEW LEAF
Agricultural Network
Exchanging Witnesses
and Leading Experiences
Against the Fraud

LPIS in Poland



Other information from the farmer – for example – statements



7k 2012-10-29

Koło Szemboła, Wlk.
Koszalin
ul. Komara 12

BIURO POWIATU
KOSZALIŃSKIEGO ARiMR
Wpłynęło dnia 2012-10-29
5078 g

Oświadczanie

Oświadczam że działka ewidencyjna 4041 wystawiona jest na pow. 1,60 ha widoczna na zdjęciu satelitarzymi zostały usunięte jesienią 2010 roku. Działka znajduje się w dobrej kulturze rolnej.

Działka ewid. 4053 wystawiona na pow. 12,50 ha, widoczna na zdjęciu satelitarzymi zostały usunięte jesienią 2010 roku. Działka znajduje się w dobrej kulturze rolnej.



Padova, May 27th 2015



A NEW LEAF

Agricultural Network
Exchanging Witnesses
and Leading Experiences
Against the Fraud

LPIS in Poland



- ✓ We have created a team of GIS specialists providing LPIS data management since January 2011
- ✓ All staff involved in updating of LPIS reference databases were ARMA's employees (reorganization of the organizational structure / providing professional staff experienced in application handling).

Result:

- GIS team guarantees the possibility of promptly implementation of remedial actions/corrective measures resulting from annually conducted QA_LPIS test
- During 2 years – over 2 000 000 reference parcels updated!



Padova, May 27th 2015



A NEW LEAF

Agricultural Network
Exchanging Witnesses
and Leading Experiences
Against the Fraud

LPIS in Poland



LPIS+ project



ARMA – head office

- 8 employees – one division
- Data update management



Regional Offices - 16

- 32 employees
- Each data modification approval
- Management work at regional level



BP – Poviats Offices- 314

- 360 employees + 170 additional employees
- Data update - directly on LPIS database
- Direct contact with beneficiary



Padova, May 27th 2015



A NEW LEAF

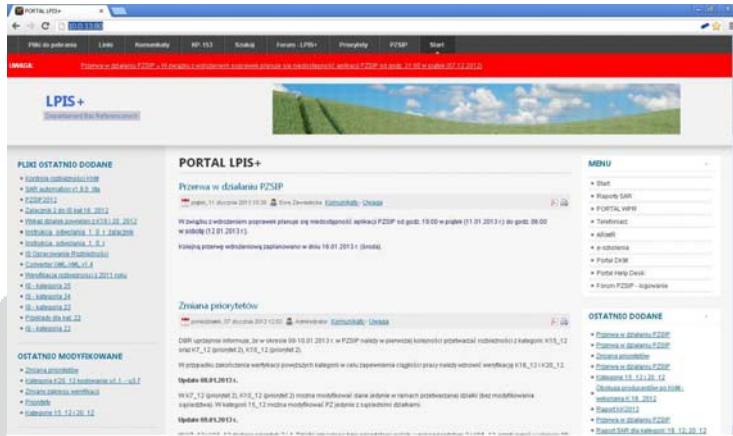
Agricultural Network
Exchanging Witnesses
of Experiences
Against the Field

LPIS in Poland



Communication in LPIS+ project

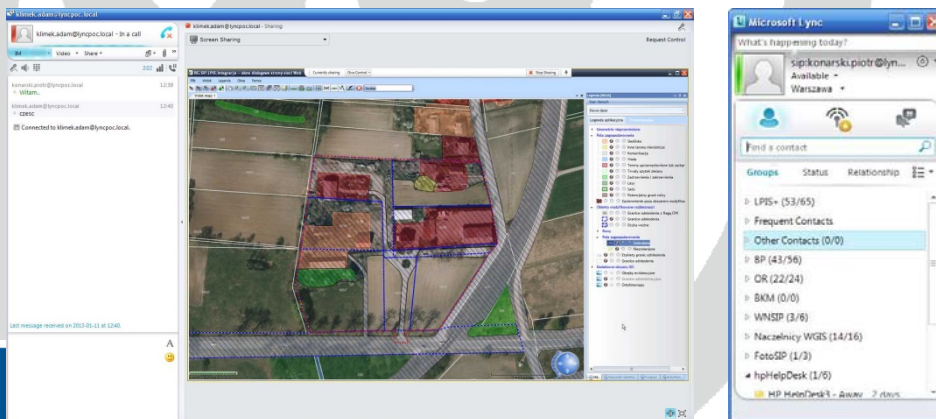
On-Line reports – statistical information – build on Oracle APEX.



Internal WWW portal with instructions and all important informations.



Microsoft Lync – instant messaging, Voice Over IP and Video conferencing!
Lync gives us opportunity to make online trainings and direct connection between all LPIS+ project participants! Most important tool in whole project!



Padova, May 27th 2015





A NEW LEAF
Agricultural Network
Exchanging Witnesses
and Leading Experiences
Against the Fraud

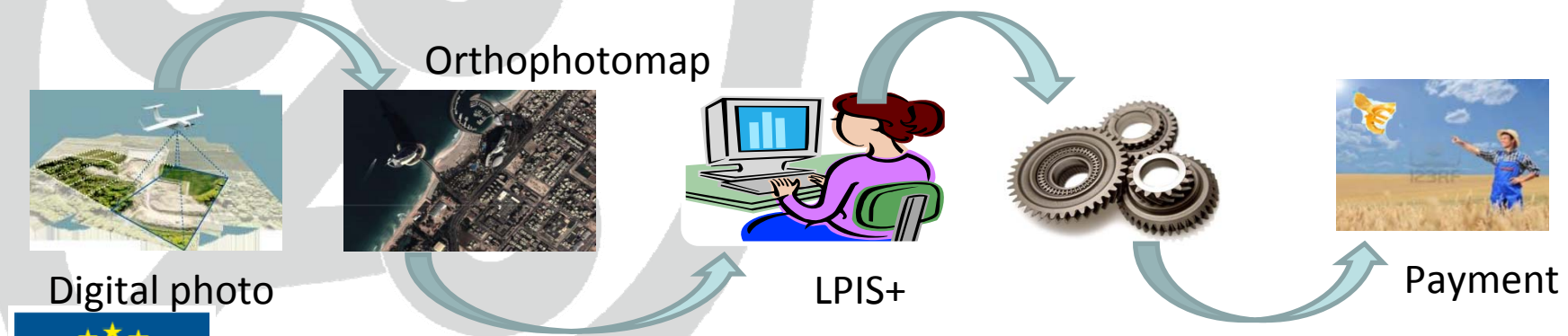
LPIS in Poland



LPIS - external conditions

Lack of good weather conditions - long winters and cloudy spring and autumn – makes the period in which we have to update the orthophotomaps drastically short - effective up to three months. At this time, we have to make photos for the area about 100 000 km² per year.

Orthophoto production time is set in tender procedures -> last stage for each year must be delivered to ARMA since 20-th of November each year. This condition give us opportunity to use at each year most actual orthophotomaps and areas eligible for payment during the proces of administrative controls.





A NEW LEAF
Agricultural Network
Exchanging Witnesses
and Leading Experiences
Against the Fraud

LPIS in Poland



Distribution of LPIS updating costs in subsequent years.

1. Since 2009 the update of LPIS system is carried out by ARMA employees,
2. We use results of QA_LPIS tests to improve the quality of LPIS reference databases,
3. 64% - the reduction of update LPIS reference databases costs from 2012.

Campaign	Average costs of LPIS reference databases updating (Euro)	Updating costs per one holding (Euro)	% of reduction costs (%)
2008	10 750 000	8,02	0%
2009	10 000 000	7,46	7%
2010	8 250 000	6,16	23%
2011	5 592 500	4,17	48%
2012-2015	3 900 000	2,91	64%



Padova, May 27th 2015



A NEW LEAF
Agricultural Network
Exchanging Witnesses
and Leading Experiences
Against the Fraud

Good practise



Collection of data sources

Internal application

Browser - Chrome

Mapy v2

X:

Y:

ID:

GML

KML

Google

Bing

Geoportale+

Geoportal

Earth

Earth Kml

Autor | Piotr Dębski



Padova, May 27th 2015



Good practise



SIĘĆ WEB OBRAZY VIDEO MAPY WIĘCEJ

bing

Nazwa firmy lub kategoria Lokalizacja lub wyszukaj tylko lokalizacje

Trasa Moje miejsca

Drogowa Z lotu ptaka Ruch drogowy Cały ekr. Drukuj Udostępnij

Świat • Polska • LU • Powiat Bialski • Kodeń

ZOBACZ OBRAZY Z MAPAMI

Nowy Jork, Stany Zjednoczone

Rotterdam, Holandia



Padova, May 27th 2015



Good practise



A NEW LEAF
Agricultural
Exchanging W
and Leading Ex
Against the

Mapy Google - Program Windows Internet Explorer dostarczony przez ARiMR

<https://www.google.pl/maps/search/51.915252388759,23.459531623799/data=!3m1!1e3!4m2!2m1!4b1?hl=pl&dg=oo> Gazeta.pl

Plik Edycja Widok Ulubione Narzędzia Pomoc

Ulubione Forum - LPIS+

Mapy Google

51°54'54.9"N 23°27'34.3"E

51°54'54.9"N 23°27'34.3"E Trasa

Elzbiecin

Milea, Delikates

Czapelka

Piekarnia GS Samopomoc Chlopska

Bialska



Good practise



The screenshot displays the Geoportal 2 iMap web application. The browser address bar shows the URL: `mapy.geoportal.gov.pl/imap/?crs=EPSG%3A2180&bbox=808061.325,461285.531,805061.125,457285.331&variant=KATASTER`. The page title is "Geoportal 2 | iMap". The main content area shows a map with red cadastral boundaries overlaid on an aerial photograph. The interface includes a search bar with the text "Szukaj", a legend titled "Zawartość mapy" with a list of services, and a scale indicator showing "Skala: 10000". The legend is expanded to show the following services:

- Państwowy Rejestr Granic - Adresy
- Państwowy Rejestr Nazw Geograficznych
- Państwowy Rejestr Granic
- Dane ewidencyjne (KIIP)
- Dane o charakterze katastralnym
- Rzeźba terenu (cieniowanie)
- Rzeźba terenu (hipsometria)
- Ewidencja Miejscowości Ulic i Adresów
- Wizualizacja BDO
- Mapa topograficzna (VMAPL2)
- Wizualizacja BDOT
- Ortofotomana



Good practise



Google Earth interface showing a satellite view of agricultural fields. The interface includes a search bar, a list of places, and a layers panel.

Search
Szukaj
np.: Tokio, Japonia
Pokaż trasę Historia

Miejsca

- [Bazylika Św. Piotra](#)
Usytuowana w Watykanie
- [Koło obserwacyjne London Eye](#)
Usytuowane w Londynie, Anglia
- [Titanic](#)
Usytuowany w Oceanie Atlantyckim
- [Zakazane Miasto](#)
Usytuowane w Pekinie, Chiny
- [Góra Fudzi](#)
Usytuowana w pobliżu Tokio, Japonia
- [Siedziba główna Google](#)
Usytuowana w Mountain View, Kalifornia
- Wielokąt bez nazwy
- Wielokąt bez nazwy
- Wielokąt bez nazwy
- Miejsca tymczasowe
- [Punkt](#)
None

Warstwy Galeria Earth >>

- Podstawowa baza danych
- Granice i nazwy geograficzne
- Miejsca
- Zdjęcia
- Drogi
- Budynki 3D
- Ocean
- Pogoda
- Galeria
- Globalna świadomość
- Więcej

Timeline: 9/12/2014, 2003, 2014





A NEW LEAF

Agricultural Network
Exchanging W
and Leading Ex
Against the

Good practise



The screenshot displays the Geoportal.gov.pl interface. The main map area shows a cadastral plan with red boundary lines and parcel numbers. The legend on the right, titled 'Zawartość mapy', lists several layers: Państwowy Rejestr Nazw Geograficznych, Państwowy Rejestr Granic, Dane ewidencyjne (KIIP), Dane o charakterze katastralnym (checked), Rzeźba terenu (cieniowanie), Rzeźba terenu (hipsometria), Ewidencja Miejscowości Ulic i Adresów, Wizualizacja BDO, Mapa topograficzna (VMAPL2), Wizualizacja BDOT, Ortofotomapa, and Skany map topograficznych. The bottom status bar indicates the map's coordinate system (EPSG 2180) and scale (1:2000).



Padova, May 27th 2015

Numerical Terrain Model - Shading

Benefits

1. Disclose all depressions
2. Easy identification of the positions and sizes for example:
ditches, ponds
3. No disturbing objects identification (buildings, trees, etc.)
4. Scalability and correlation with orthophotomap



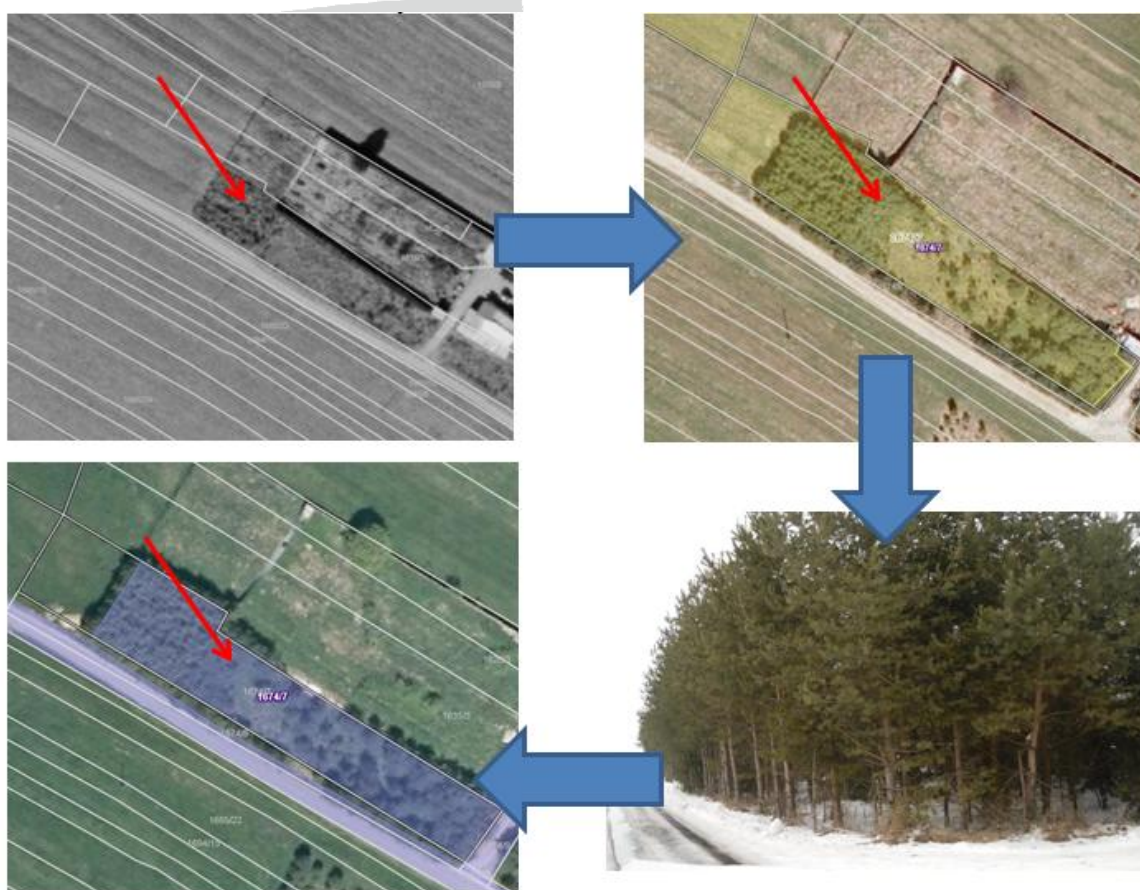


A NEW LEAF
Agricultural Network
Exchanging Witnesses
and Leading Experiences
Against the Fraud

Good practise – any doubts – rapid field visit



Cadaster- whole parcel – agricultural land, MEA – in the middle of parcel,
declaration- hole parcel, extra field visit



Padova, May 27th 2015



A NEW LEAF

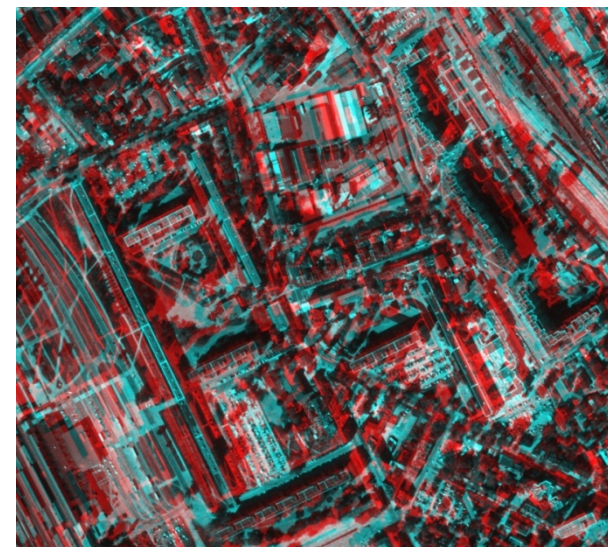
Agricultural Network
Exchanging Witnesses
and Leading Experiences
Against the Fraud

Good practise – Polish LPIS + nearest future ANAGLYFIC ORTHOPHOTOMAP-3D



Goals:

- ✓ better photointerpretation
- ✓ increase the accuracy of identifying changes in land use
- ✓ eliminating mistakes and inaccuracies in the calculation of the maximum eligible area for payments
- ✓ easy-to-use search of additional mechanisms exclusion correction and verification, EFA, and other elements identified on orthophotomap



Padova, May 27th 2015



A NEW LEAF

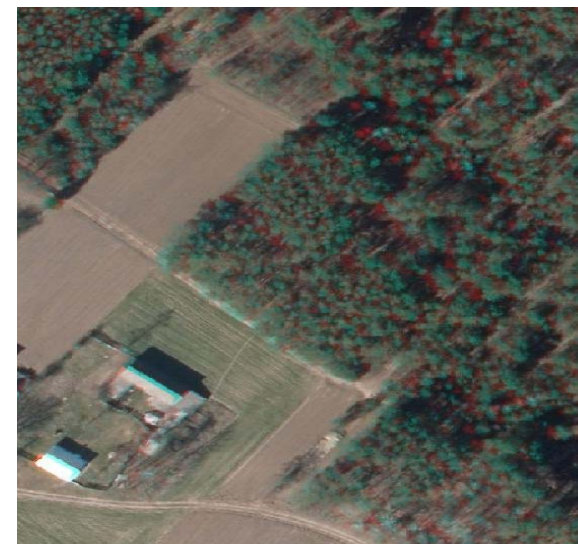
Agricultural Network
Exchanging Witnesses
and Leading Experiences
Against the Fraud

Good practise – Polish LPIS + nearest future ANAGLYFIC ORTHOPHOTOMAP-3D



USE:

- ✓ another layer of the LPIS
- ✓ a new measurement tool
- ✓ identification of land use
- ✓ Identification and analysis of spatial objects
- ✓ verification EFA and other elements identified on orthophotomap
- ✓ Interpretation of relief



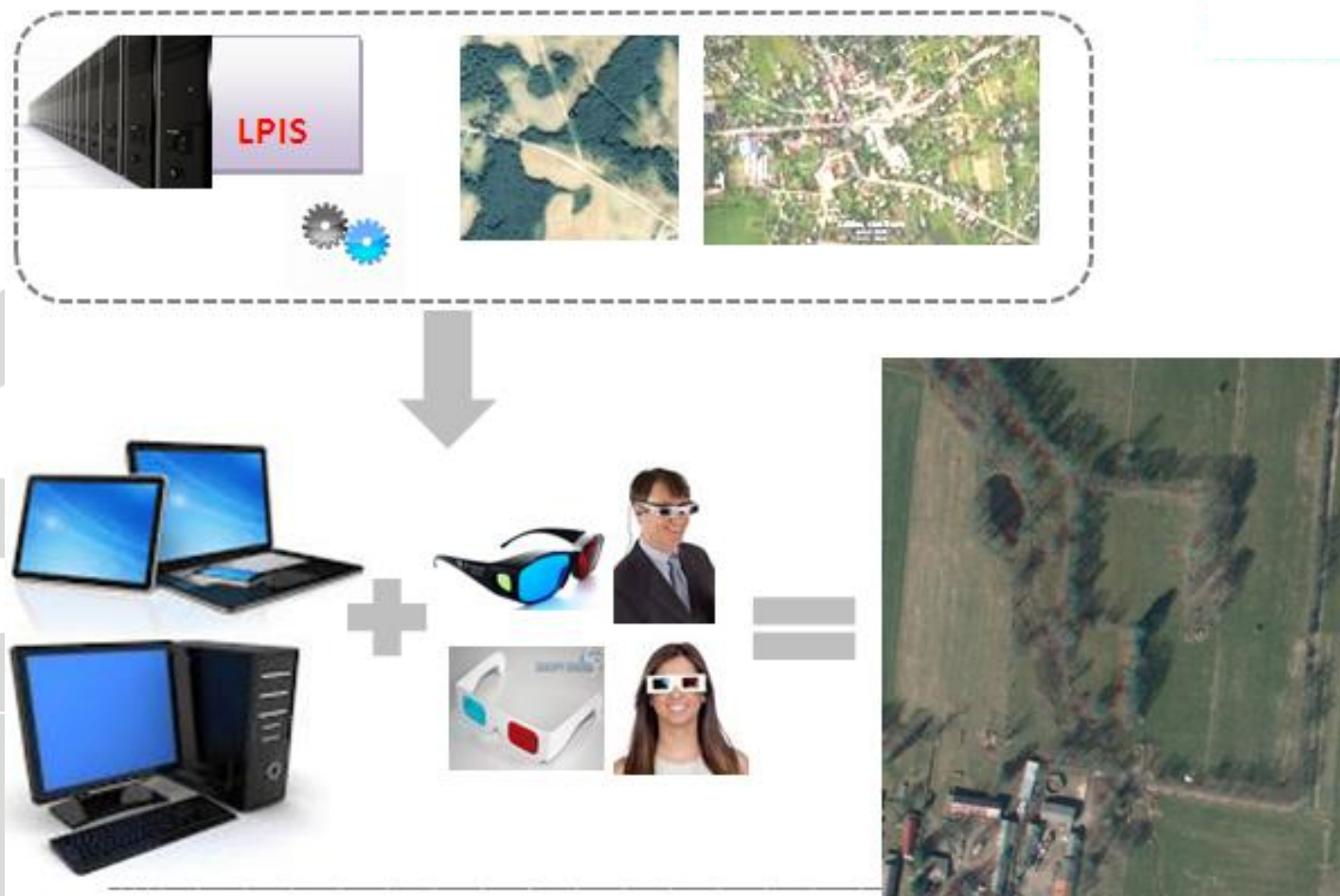
Padova, May 27th 2015



A NEW LEAF

Agricultural Network
Exchanging Witnesses
and Leading Experiences
Against the Fraud

Good practise – Polish LPIS + nearest future ANAGLYFIC ORTHOPHOTOMAP-3D



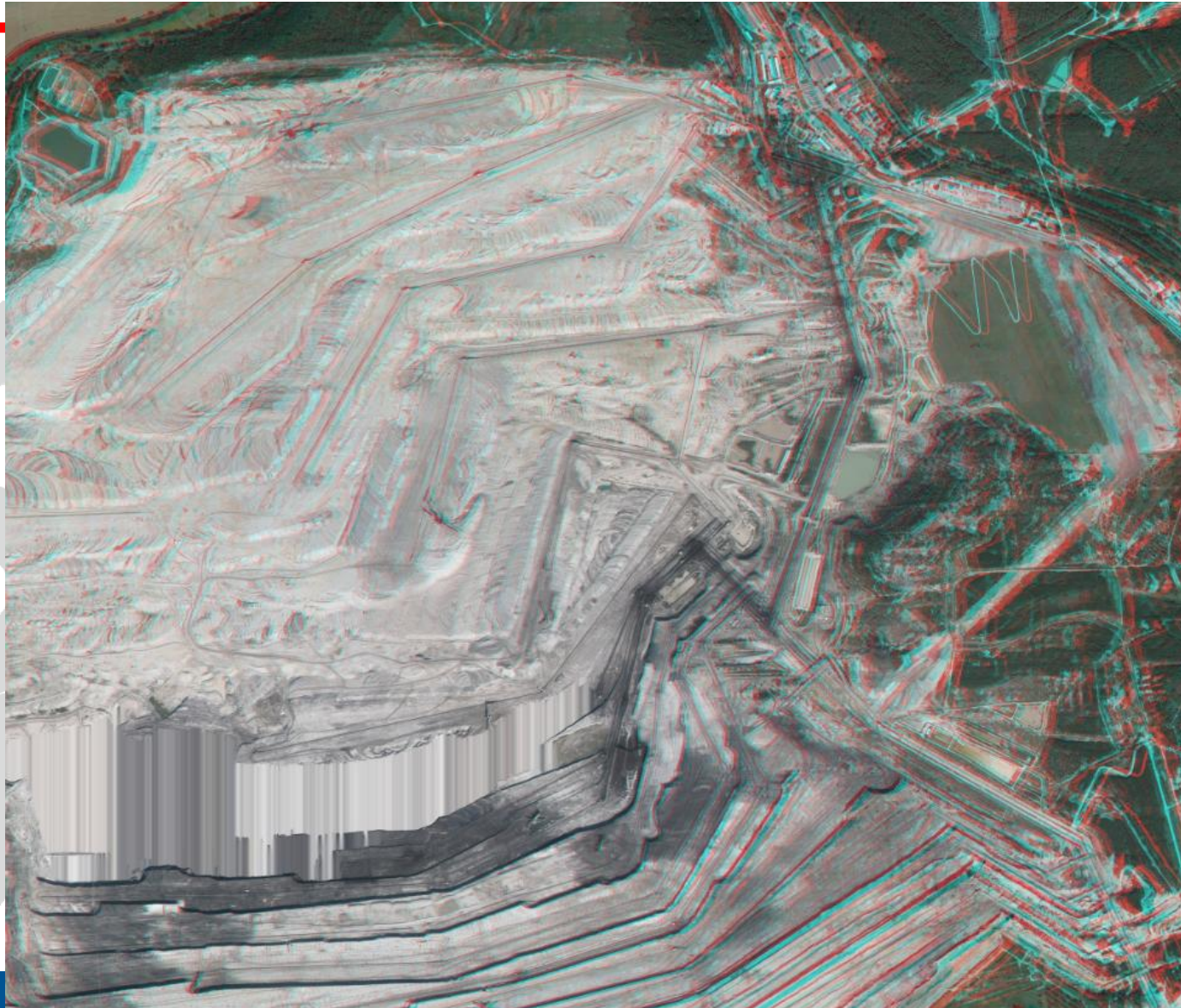
Padova, May 27th 2015

Good practise – Polish LPIS + nearest future ANAGLYFIC ORTHOPHOTOMAP-3D



A NEW LEAF

Agricultural Network
Exchanging Witnesses
and Leading Experiences
Against the Fraud





A NEW LEAF

Agricultural Network
Exchanging Witness
and Leading Experiences
Responsible Growth

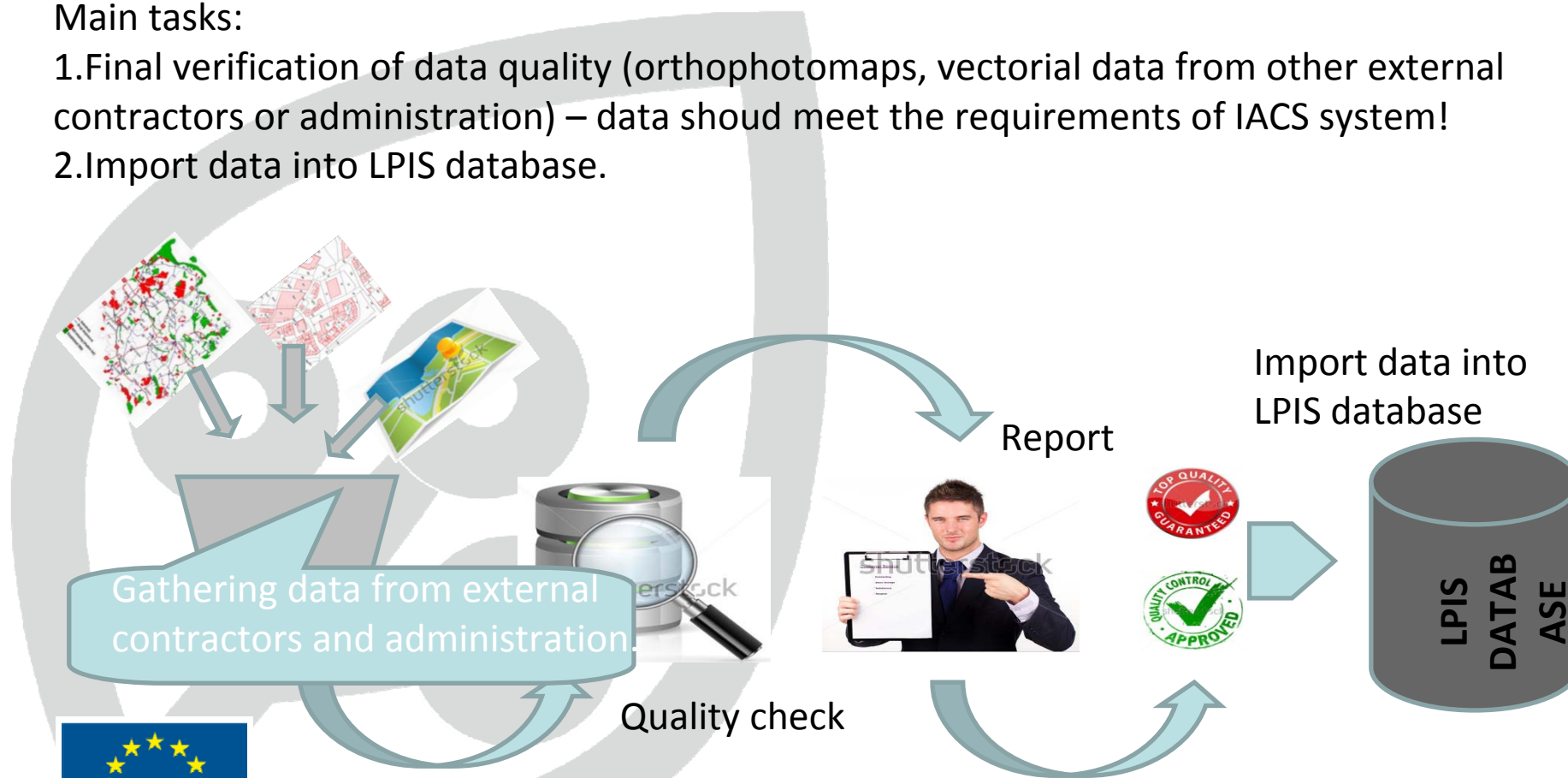
Internal quality control LPIS data quality checks



WJD (Data Quality Check) – external company, 3 years contract -> they can not participate in other ARMA tenders.

Main tasks:

1. Final verification of data quality (orthophotomaps, vectorial data from other external contractors or administration) – data should meet the requirements of IACS system!
2. Import data into LPIS database.



Padova, May 27th 2015

Internal quality control

„Double check” verification

Two levels of verification:

- Difference Verifiers – Poviast Offices
- Decision Verifiers – Regional Offices

- Land use incompatible with orthophotomap
- Do not include the results of KNM.
- Do not take into account changes made by the farmer on the graphical attachment
- Do not take into account the declaration of the farmer
- Do not take into account the modifications introduced as a result of the appeal against the decision
- Do not take into account differences duplicated
- Other identified errors
- Verification without errors



Internal quality control „Double check” verification

Results of control:

- ✓ confirmation of discrepancies
- ✓ rejection of discrepancies
- ✓ return for reassessment
- ✓ referral to extra field visit
- ✓ a small correction can be made by the
Decision Verifier



Internal quality control

QA_LPIS_OR - LPIS quality assessment

Main goals:

- ✓ Assessment of quality of modification
- ✓ Assessment of quality of LPIS data

QA_LPIS_OR is not intended to verify the correctness of the modification made by individual Difference Verifiers

QA_LPIS_OR is carried out in quarterly cycle.





Internal quality control



QA_LPIS_OR - LPIS quality assessment

QA_LPIS_OR – 4 stages:

1. Reference parcels selection – define the conditions - 1250 reference parcels (RP) in each Regional Offices – 20000 RP – in Poland.
2. Vectorisation
3. Regional offices level - analysis and reporting of results achieved.
4. Analysis of results – Head office level





A NEW LEAF

Agricultural Network
Exchanging Witnesses
and Leading Experiences
Against the Fraud

Internal quality control



QA_LPIS_OR - LPIS quality assessment

QA_LPIS : 2014

Main menu Reference Parcels Scoreboard

File Edit Theme View Help

Active Reference Parcel: 2, 120503_5.0007.395/4 1,250 of 1,250 edited

Map Themes

- pom_rowy_20140527
- pom_oczka_wodne_20140527
- pom_krm_dzial_rolni_20141126
- pom_pz_20140613
- GACMask
- LCC-Objects
- Reference Parcels
- RP All
- ZSZK
- DKM

Reference Parcels

Sample Number: 2 Reference Parcel ID: 120503_5.0007.395/4

RP conform? Sample: Y

Reason for skipping: Critical defect:

Cause of non-conformity: Area purity %: 101.98

Record: 2

Reference Parcels LCC-Objects

Sample Number	Reference Parcel-ID	DB_ID	LPIS - Eligible area	LPIS - Declared area	Date of export	Feasible for inspection	Reason for skipping	Explanation when 'force majeure'	Area comparable?	Feasible?
1	2	3	4	5	6	8	9	10	11	12
1	061409_2.0009.610	178992223	11288	11300	Jun 13, 2014 12:...	Y			Y	Y
2	120503_5.0007.395/4	220120859	15474	15500	Jun 13, 2014 12:...	Y			Y	Y
3	281508_5.0023.331	155631534	0	0	Jun 13, 2014 12:...	Y			Y	N
4	060307_2.0014.73	188744434	0	0	Jun 13, 2014 12:...	Y			Y	N

Scale 1: 1043 630,798.38 203,402.32

Drag a frame over the geometries you want to select. Use Shift or CTRL to select multiple geometries.



Padova, May 27th 2015



Internal quality control



Extra procedure – quality control of LPIS data- using visualization

- Take into account – ineligible area for payment and reference boundaries
- Control is carried out in quarterly cycle by Head office employees

Control:

Reference boundaries and ineligible area – consists of the visual and analytical assessment of the accuracy of modifying, taking into account orthophoto and other documentation – results of OTSC, graphical attachments, documentation from cadaster....





A NEW LEAF
Agricultural Network
Exchanging Witness
and Leading Experiences
Against the Fraud

Internal quality control



Extra procedure – quality control of LPIS data- using visualization

Main stages:

- 1.Preparation of criteria for category's selection
- 2.Preparation list of discrepancies
- 3.Selection – random selection or risk analysis
- 4.Assign control for employees and conducting control
- 5.Preparation of analytical documentation and test report
- 6.Report and the implementation of corrective actions



Padova, May 27th 2015



A NEW LEAF

Agricultural Network
Exchanging Witnesses
and Leading Experiences
Against the Fraud

Polish LPIS + nearest future



Thank you for your attention...

Grazie per l'attenzione....

Bardzo dziękuję za uwagę....



Padova, May 27th 2015